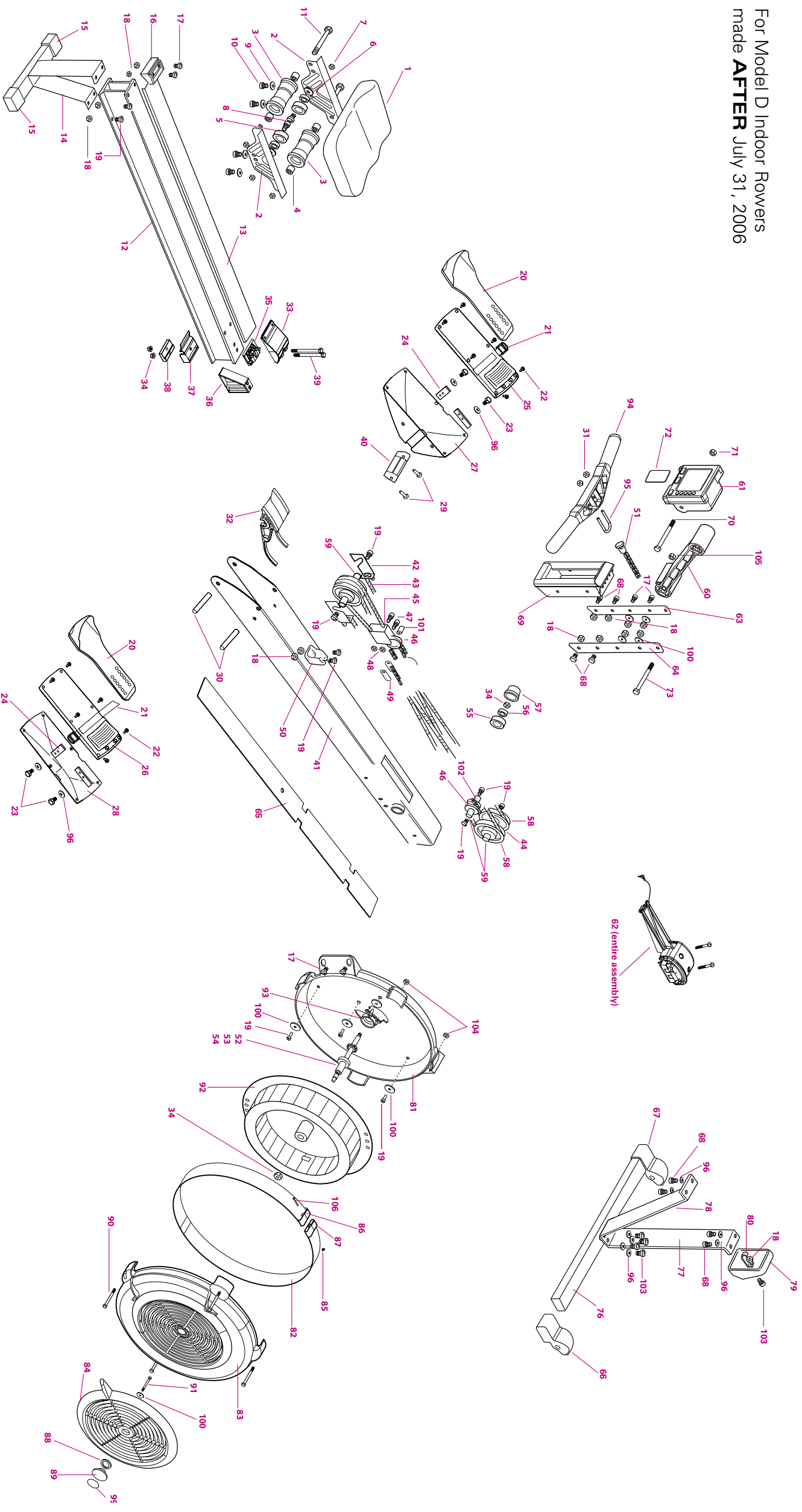


MODEL D SCHEMATIC

For Model D Indoor Rowers
made **AFTER** July 31, 2006



価格表 MODEL D2

No	品番	品名	価格
1	1929	Seat Top w/Screws	¥4,200
2	1138	Seat Carriage Left	¥2,310
	1137	Seat Carriage Right	¥2,310
3	1724	Top Roller (x2)	¥4,725
4	1302	Seat Spacer (x2)	¥315
5	1725	Bottom Roller (x2)	¥2,525
6	125	Washer 3/8 (x2)	¥210
7	1209	Nut 3/8 - 16 BC Nylock	¥315
8	1208	Bottom Seat Roller Bolt x 2	¥420
9	1246	Seat Top Lock Washer x 4	10に含む
10	1207	Seat Top Screw x 4	¥420
11	1211	Top Seat Roller Bolt x 2	¥420
12	1954	Monorail Assy D w/Track	¥37,800
13	1762	Track/Tape Assembly w/Rivet	¥5,775
14	1951	Rear Leg Model D2 w/Feet	¥7,350
15	1044	Foot Cap D2/E (x2)	¥1,050
16	1008	Rear Bumper	¥840
17	1201	3/4" Head Screw x 2	¥158
18	1213	1/4 20 Nut (x2)	¥126
19	1231	Button Head Screw Patched x2	¥158
20	1063	Flexfoot Grey D2 & E x2	¥4,200
21	1517	Footstrap (x2)	¥1,890
22	1241	10 x 1/2 TFS screw x6	¥315
23	1243	Screw20 x 5/8 HCS x2	¥210
24	1139	Reinforcing Bracket x2	¥630
25	1055	Cover Foot Stretcher Left	¥1,155
26	1054	Cover Foot Stretcher Right	¥1,155
27	1057	Belly Left Footstretcher	¥2,625
28	1056	Belly Right Footstretcher	¥2,625
29	1242	10 x 3/4 TFS screw x2	¥126
30	1101	Hanger Shaft Threaded	¥840
31	1235	Nut 1/4 - 20 Nylock SS x2	¥210
32	1041	Mouse	¥1,260
33	1038	Upper Hanger Plastic	¥1,365
34	1244	3/8" Nylock Nut	¥105
35	1153	Upper Die Cast Hanger	¥1,365
36	1062	Monorail Bolt Support	¥1,470
37	1039	Lower Hanger Plastic	¥840
38	1154	Lower Die Cast Hanger	¥1,050
39	1204	Monorail Hanger Bolt x 2	¥525
40	1037	Compression Member	¥840
41	1129	Box Frame D2	¥21,000
42	1104	SCAM x2	¥2,100
43	1731	Shock Cord	¥2,625
44	1310	SC Pulley Spacer x2	¥210
45	1756	Traveling Pulley Assy	¥1,680
46	1024	Chain Idler Pulley x2	¥1,260
47	1206	Screw for Traveling Pulley x 2	¥210
48	1249	Nut Traveling Pulley x 2	¥126
49	285	Chain Connector Small	¥420
50	1058	Handle Hook Model D2/E	¥840
51	1716	Chain with Connector	¥5,250
52	1165	Axle D/E	¥4,725

No	品番	品名	価格
53	1163	Sprocket D/E	¥3,150
54	1300	17mm Bearing	¥1,470
55	1013	R8 Bearing Cup	¥420
56	232	Bearing R8	¥1,260
57	1010	Bearing Cover	¥525
58	1011	Shock Cord Pulley x2	¥2,100
59	1130	Axle Shock Cord	¥945
60	1025	Monitor Arm Black	¥2,625
61	1874	PM3 Monitor	¥25,200
62	1887	Power Generator Assembly	¥4,725
63	1168	Guide Bracket Left	¥2,310
64	1169	Guide Bracket Right	¥2,310
65	1526	Return Mechanism Cover	¥1,050
66	1059	Footcaster Right	¥1,260
67	1060	Footcaster Left	¥1,260
68	1253	Short Allen Screw x4	¥368
69	1003	Chain Guide	¥2,520
70	1268	Monitor Arm Bolt	¥315
71	1271	Hexnut 3/8	¥158
72	1810	Logcard	¥1,575
73	1266	HSC 3/8 x 4 SS	¥315
76	1925	Front Foot w/Casters	¥5,250
77	1173	Leg Front Long D	¥3,780
78	1172	Leg Front Short D	¥3,570
79	1009	End Cap	¥1,050
80	1131	End Cap Hook	¥630
81	1031	Flywheel Cover Back D	¥4,200
82	1912	Outlet Perf w/Connectors and Sc	¥3,625
83	1942	Fan Cover Assy. D	¥5,775
84	1061	Damper D2 / E	¥2,625
85	1274	1275 Outlet Perf Screw & Nut	¥210
86	1035	Perf Connector Screw Side	¥525
87	1036	Perf Connector Nut Side	¥525
88	1278	Wave Washer	¥315
89	1067	Hub Cap Model D2 / E	¥420
90	1276	Flywheel Cover Bolt x 4	¥368
91	1273	Damper Screw	¥105
92	1940	Flywheel Assembly (machine made	¥12,600
	2940	Flywheel Assembly (machine made	¥12,600
93	1012	17mm Bearing Rubber Cup	¥525
94	1042	Handle W/ Grips	¥4,200
95	244	Handle U-Bolt	¥525
96	1205	Lock Washers 103/68に含む	¥0
99	1534	Hubcap label	¥315
100	1232	Fender Washer	¥53
101	1303	Traveling Pulley Spacer	¥210
102	1305	Idler Pulley Spacer (x2)	¥420
103	1248	Long Allen Screw x4	¥368
104	327	Nut #10 SS (4)	¥210
105	1270	Nylock 3/8 - 16 SS	¥105
106	1274	Pan PH #6 x 2 SS	85に含む
107	1251	Poly Rivet	¥420
			¥0

お問い合わせ CONCEPT2日本総代理店
株式会社 スターラインジャパン
 TEL 045-852-4516 / FAX 045-852-4254
 E-mail sports@starline.co.jp